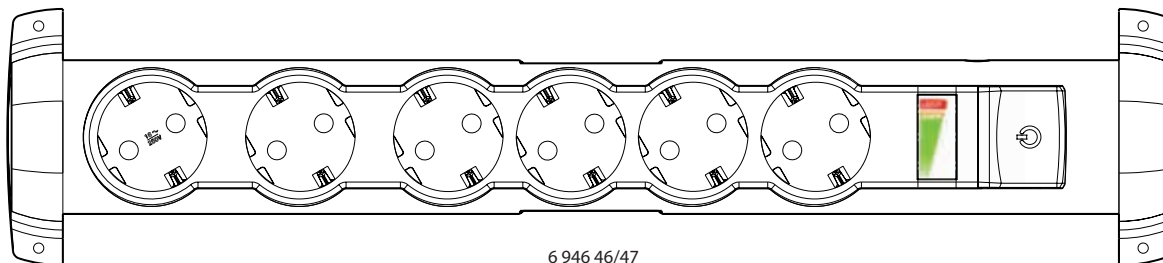


**Multi-outlet extensions for comfort and safety
 with rotating 2P+E - 16 A socket unit
 with overload indicator or surge protective device
 German standard**

Cat. No(s): 6 946 11/12/41/43/46/47/51/56



6 946 46/47

1. USE

Multi-outlet extensions for comfort and safety: 4 and 6 German standard shuttered sockets.

Socket unit which pivots on its axis, incorporating a switch with indicator.

Supplied with self-locking cable tie to hold the cords together. 1.5 m and 3 m power supply cord (3 G 1.5 mm²) - 2 P+E - 16 A - max. power 3680 W at 230 V.

- **With overload indicator:** equipped with a load indicator displaying the power consumption of connected appliances - Circuit breaker with manual reset - 4 x 2P+E and 6 x 2P+E.

- **With surge protective device:** Protects electrical and electronic appliances (TV, Hi-Fi system, computer, etc.) from lightning and overvoltages. With LEDs indicating the surge protective device status (on: appliances protected, off: surge protective device not working, extension needing to be replaced) - 4 x 2P+E and 6 x 2P+E.

2. RANGE

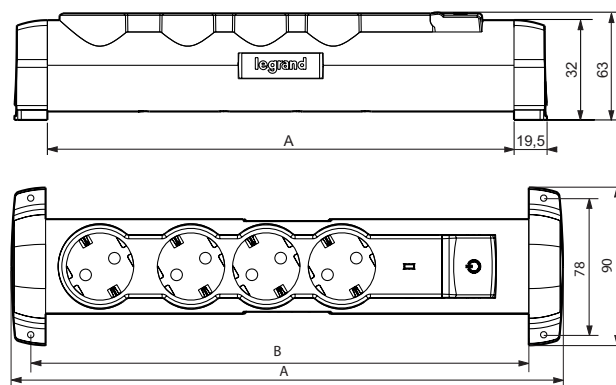
2P+E comfort socket units with overload indicator

	Cable length 1.5 m - 3 G - 1.5 mm ²	Cable length 1.5 m - 3 G - 3 mm ²
	White/Grey	White/Grey
Unit with four 2P+E comfort sockets	6 946 41	6 946 43
Unit with six 2P+E comfort sockets	6 946 46	6 946 47

2P+E comfort socket units with surge protective device

	Cable length 1.5 m - 3 G - 1.5 mm ²	
	White/Grey	Black
Unit with four 2P+E comfort sockets	6 946 51	6 946 11
Unit with six 2P+E comfort sockets	6 946 56	6 946 12

3. DIMENSIONS (mm)



No. of sockets	Cat. Nos.	A	B
4	6 946 11 - 6 946 41	315	293
	6 946 43 - 6 946 51		
6	6 946 12 - 6 946 46	410	388
	6 946 47 - 6 946 56		

4. OPERATION

- Multi-outlet extensions equipped with:
- 16 A shuttered sockets tested to withstand 10,000 operations.
- 16 A (resistive), 4 A (motor load) switches with indicator, which can be operated by hand or foot.
- Optimum space between 2 sockets for connecting transformers, chargers.
- Self-locking cable tie to hold the cords together.
- Socket unit can be rotated between its fixing supports.
- Can be fixed with screws.

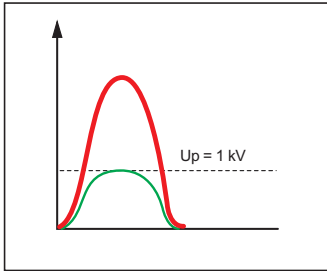
Multi-outlet extensions for comfort and safety with rotating 2P+E - 16 A socket unit with overload indicator or surge protective device German standard

Cat. No(s): 6 946 11/12/41/43/46/47/51/56

4. OPERATION (continued)

4.1 Surge protective device characteristics

The role of the surge protective device is to minimize overvoltages, regardless of their origins, at the terminals of an installation or any electrical/electronic equipment. To do this, it needs to absorb as much energy as possible. The surge protective device can protect your sensitive appliances and thus prevent irreparable damage to expensive equipment (computer, TV, hi-fi, DVD players, etc.).



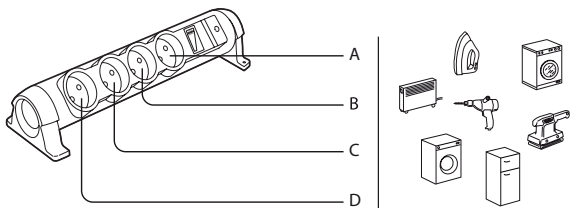
- Uc: 250 V - 50 Hz
- Uoc: 4 kV
- In: 2 kA
- 3500 W - 230 V~
- Isc: 3 kA
- Imax: 4 kA
- Up: 1 kV

4.2 Circuit breaker operation

- Risks associated with electricity consumption overload:

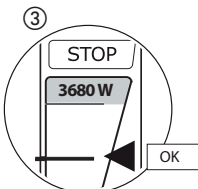
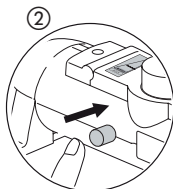
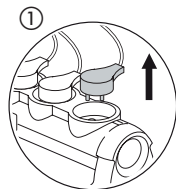
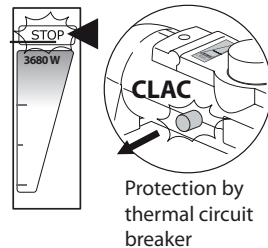
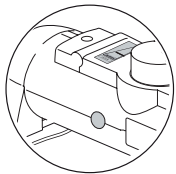
Electricity consumption overload occurs when the power required by all the connected appliances exceeds the maximum power the multi-outlet extension can withstand. The resulting temperature rise could potentially cause a fire.

- **The Safe Control System**, a Legrand innovation, prevents the maximum power the multi-outlet extension can deliver being exceeded. It indicates the power consumption level. In the event of an overload, the thermal protection trips and cuts the power supply to the multi-outlet extension in order to guarantee your safety.



■ A + B + ... < 3680 W → OK

■ A + B + C + D > 3680 W



5. TECHNICAL CHARACTERISTICS

5.1 Mechanical characteristics

Impact resistance: IK 04

Resistance to ingress of solid bodies and liquids: IP 20

5.2 Material characteristics

Polypropylene unit

Reinforced polyamide shutter

Self-extinguishing:

- 750°C/30 s for parts made of insulating materials holding live parts in place

- 650°C/30 s for other insulating components

5.3 Climate characteristics

Operating temperature: - 5° C to + 35° C

6. APPROVALS AND QUALITY MARKS

- Switch with integrated indicator: VDE, S, N, D, Fi, (S) (Germany, Sweden, Norway, Denmark, Finland, Switzerland) in accordance with standard IEC 61058.1.

- Thermal protection: VDE in accordance with DIN EN 60934.